

MODEL CL 110

Cottoner



- Heavy Duty Construction
- PLC Control
- Two-Station Cotton Insertion
- Guillotine Tearing Device
- Speeds up to 120/cpm
- Available with Missing Cotton & Whisp Detection



**NJM/CLI
PACKAGING SYSTEMS
INTERNATIONAL®**

Respected, dedicated and proven leadership since 1915!

Quality | Reliability | Experience | Service | Technology

MODEL CL 110

Cottoner

TECHNICAL SPECIFICATIONS

Standard Features:

- PLC control
- Two-station cotton insertion
- Guillotine tearing device
- Machine stops automatically when there is no cotton
- Photocell for container and cotton detection
- Counter for 1, 2 or 3 shots of cotton
- Spring-loaded cotton drive rollers
- Control box on slide out drawer
- Motorized height adjustment
- Back up switch
- Stainless steel cabinet
- Safety guarding

Container and Cotton / Rayon Criteria:

- Container height: from 2.5" (63.5 mm) to 8" (203 mm)
- Container diameter: minimum of 1" (25.4 mm) to a maximum of 4-1/2" (114 mm)
- Neck opening: minimum of 5/8" (16 mm) to a maximum of 2-3/4" (70 mm)
- Cotton/rayon length: minimum of 3" (101 mm) to a maximum of 8" (203 mm)
- Cotton/rayon weight: 6 - 16 gr (with 5/8 tube and pusher)
16 - 24 gr (with 3/4" tube and pusher)

Available Options:

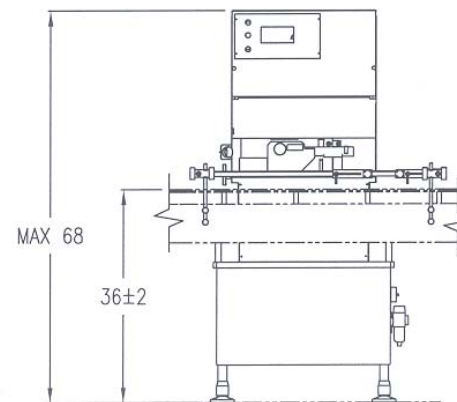
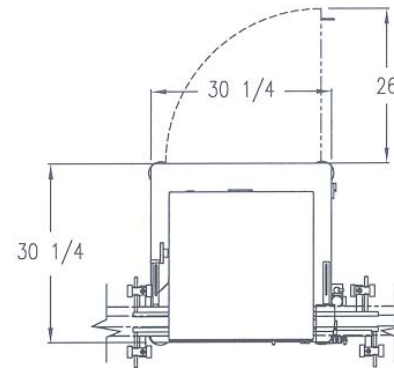
- Conveyor
- Missing cotton and whisp detection

Air & Electrical Requirements:

- Power supply: 120VAC, 1 phase, 60 Hz, 5A
- Air supply: 90 PSIG, 11 SCFM

Size, Weight & Noise Level

- Length: 30-1/4" (0.81 m)
- Width: 30-1/4" (0.81 m)
- Height: 67-1/2" (1.7 m)
- Weight: 500 pds (2268 kg)
- Noise: 72 db



Floor Plan

Dimensions shown are for basic machines and may vary depending on options. In view of our policy of continuing research and product improvement, actual specifications may vary from those shown. Please consult with an NJM/CLI representative regarding your specific requirements.

All NJM/CLI equipment is covered by a one year warranty on parts. A comprehensive nationwide service, parts, and sales support program is available for the life of your equipment. A customized Preventative Maintenance Program for this equipment is also available.

Contact our Customer Service Department at (603) 448-3940 for more information.

This equipment can be purchased separately or as part of a fully integrated packaging line. Contact your sales representative for full details on other packaging equipment and complete turnkey line integration services.

Protected by one or more U.S. and foreign patents.



**NJM/CLI
PACKAGING SYSTEMS
INTERNATIONAL®**



USA 56 Etna Road
Lebanon, NH 03766 USA **1-800-432-2990**

CANADA 8 Plateau, Pointe-Claire
Quebec, H9R 5W2 Canada **1-800-811-6990**

www.njmcli.com Copyright © 2002 NJM/CLI
Parent Company for New Jersey Machine, Inc. (NJM)